

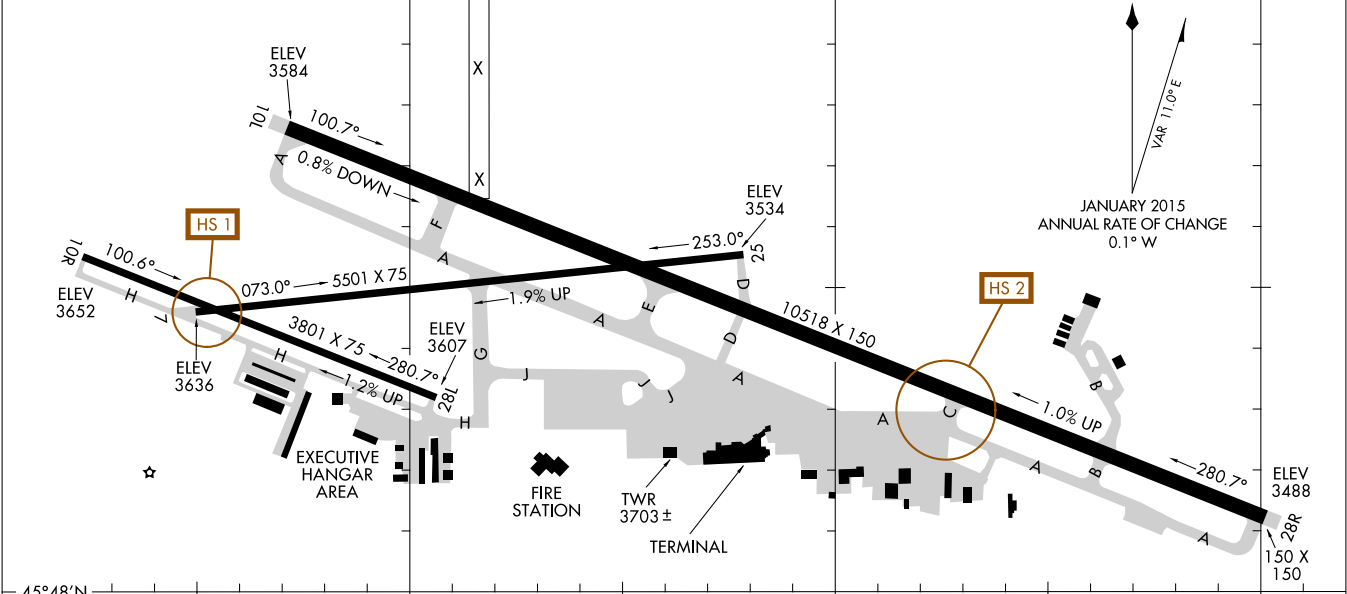
FIELD ELEV 3652

CAUTION: BE ALERT TO RUNWAY CROSSING CLEARANCES.  
READBACK OF ALL RUNWAY HOLDING INSTRUCTIONS IS REQUIRED.

NW-1, 30 APR 2015 to 28 MAY 2015

ATIS 126.3  
 BILLINGS TOWER 127.2 257.8  
 GND CON 121.9  
 CLNC DEL 121.9

45°49'N



RWY 07-25 S-12.5  
 RWY 10L-28R S-116, D-182, 2S-175, 2D-307  
 RWY 10R-28L S-12.5

45°48'N

108°33'W

108°32'W

108°31'W

NW-1, 30 APR 2015 to 28 MAY 2015